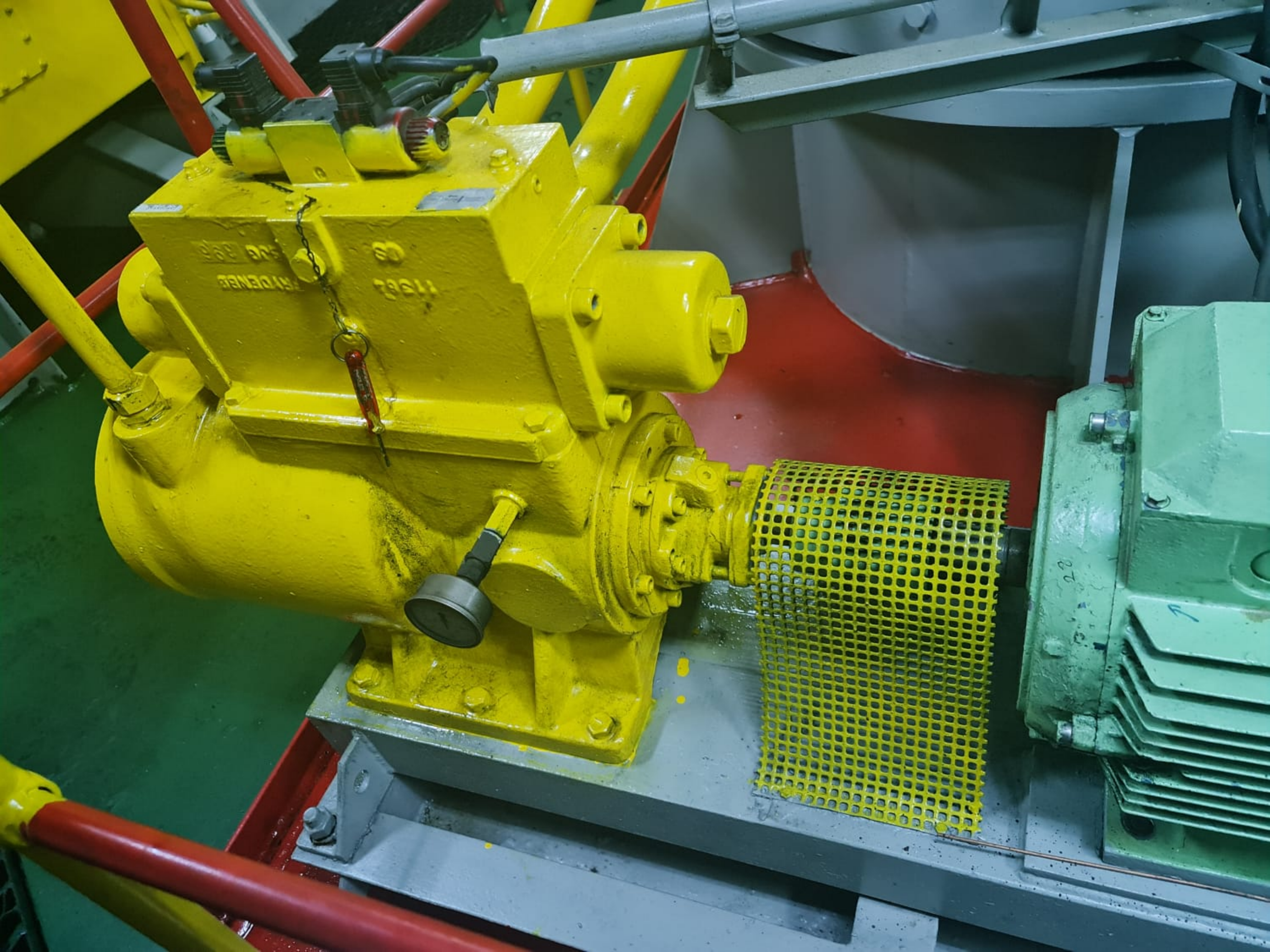




GİZEM
MÜHENDİSLİK A.Ş.



GENERAL
1108

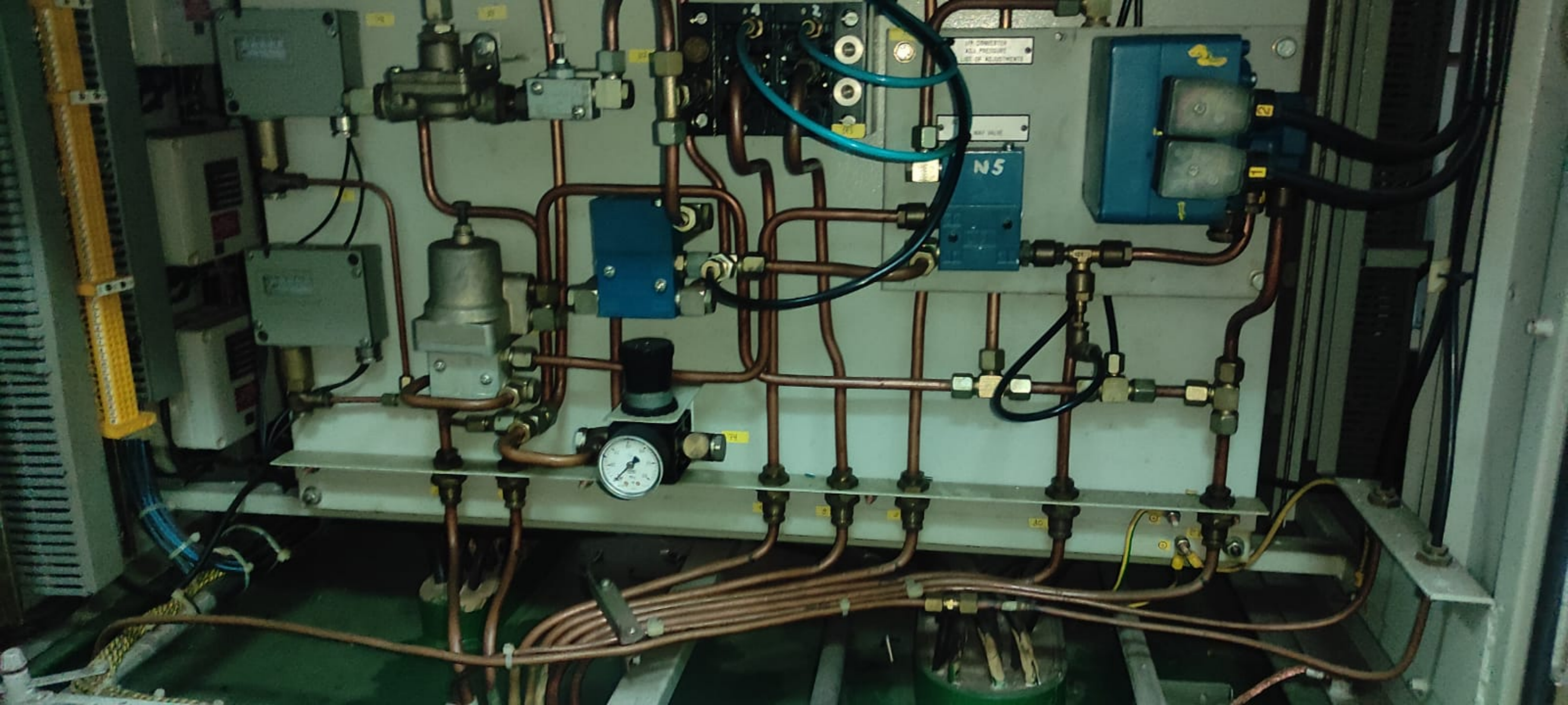
20

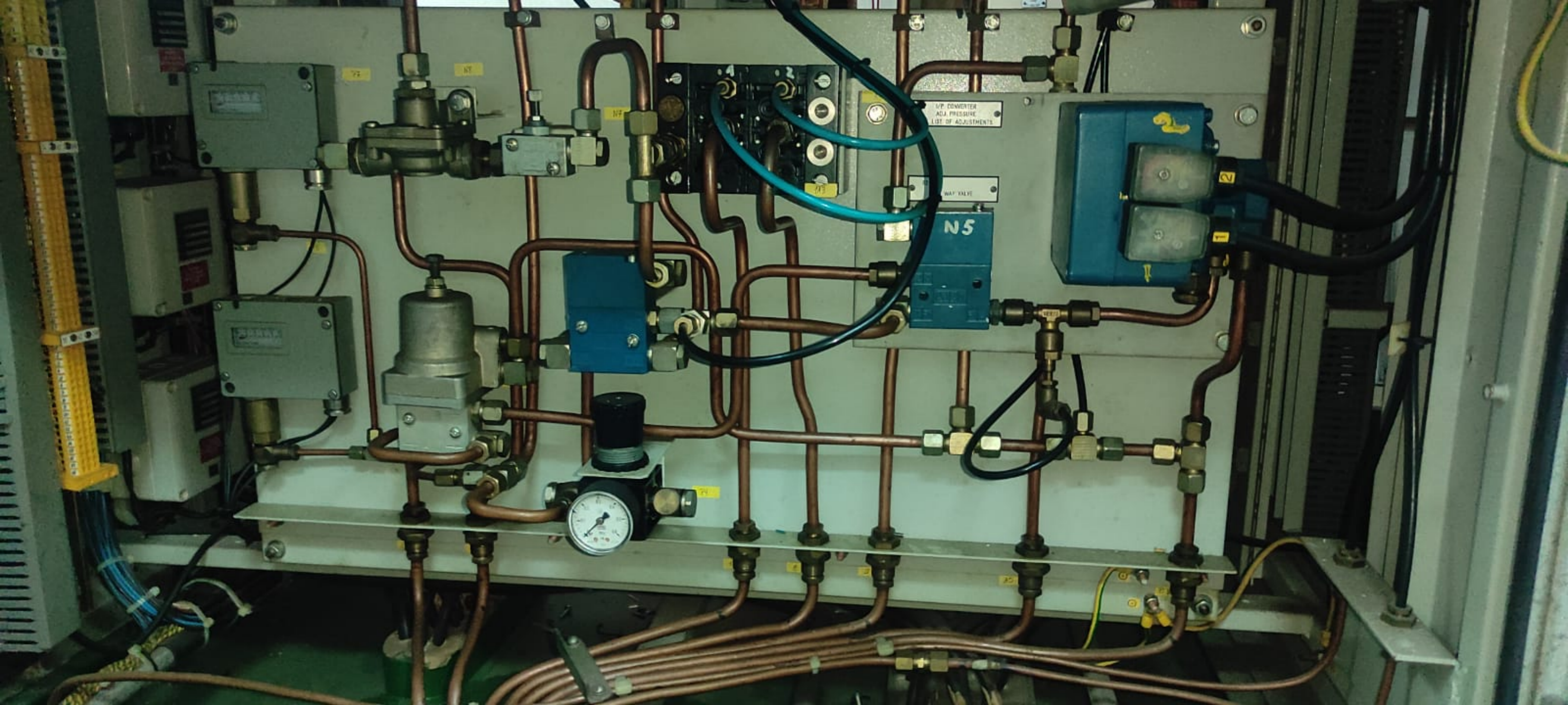










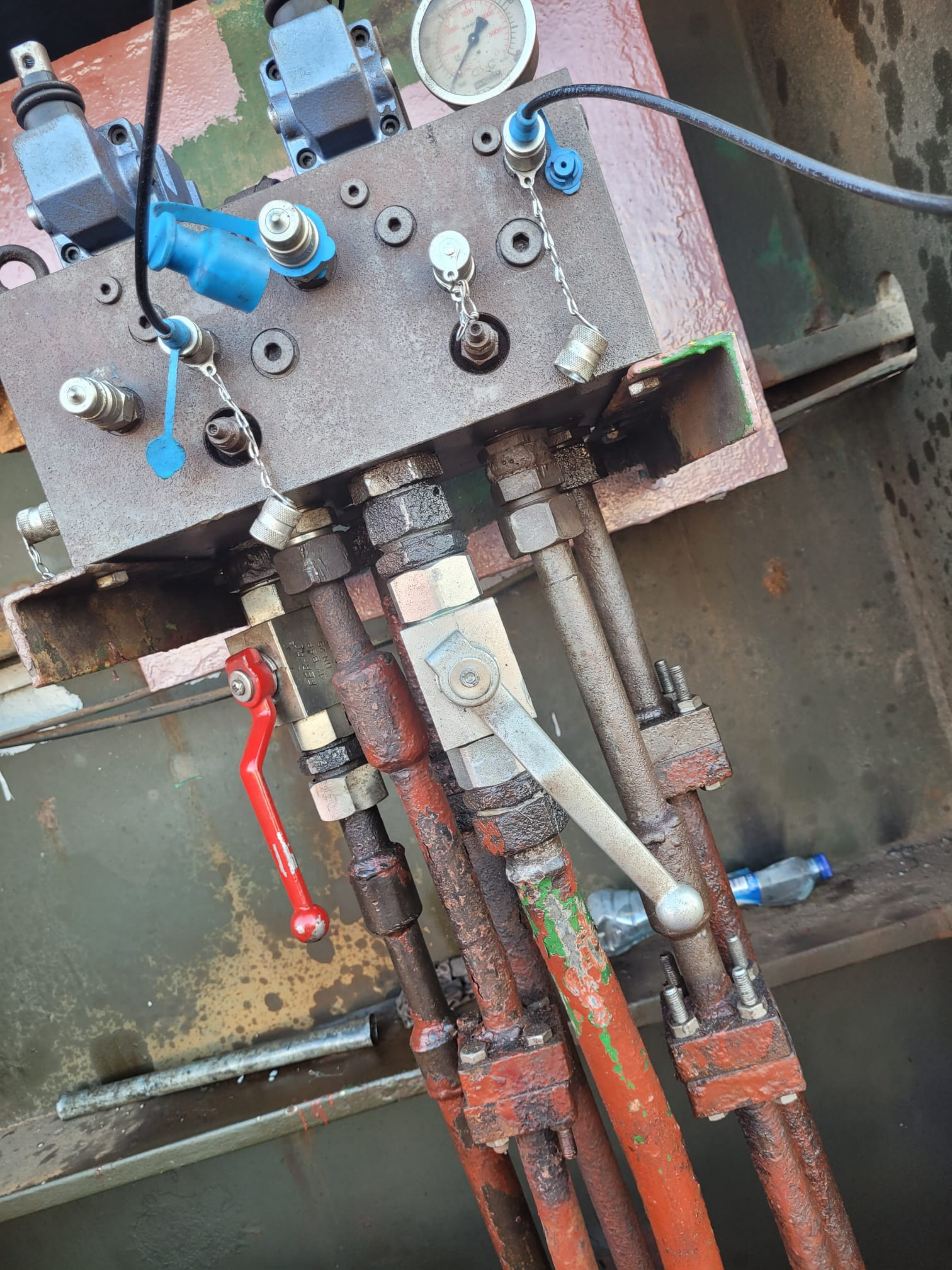


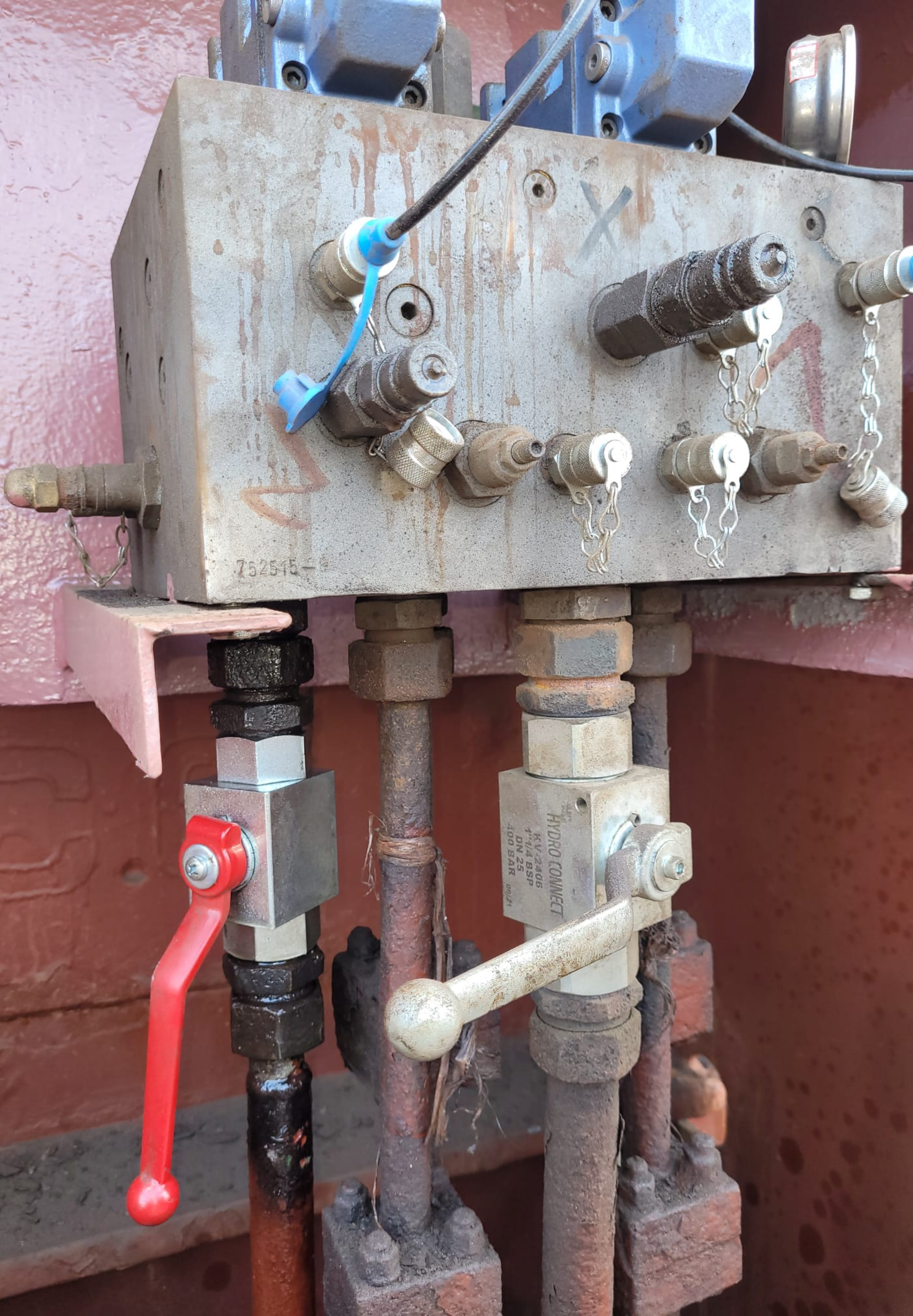


- ABSTELLEN
SHUT DOWN
- SCHALT MASCHINE
TURNING GEAR
- FEHL MANOEVRE
WRONG WAY
- NIEDERSTREBLASE
BETRIEBSSIGNAL
AUX. BLOWER FEEDING
- WIEDER EINSCHALTUNG
CANCEL
- VORAUSS
AHEAD
- ZURUCK
ASTERN
- STEUERUNG VOM MOTOR
ENGINE SIDE CONTROL
- STEUERUNG VOM MKR
CONTROL ROOM CONTROL
- STEUERUNG VON BRUCKE
BRIDGE CONTROL
- TEST
- NOT-STOPP
EMERGENCY STOP

PC 010109 -24V
ME EMERGENCY
CONTROL BOX



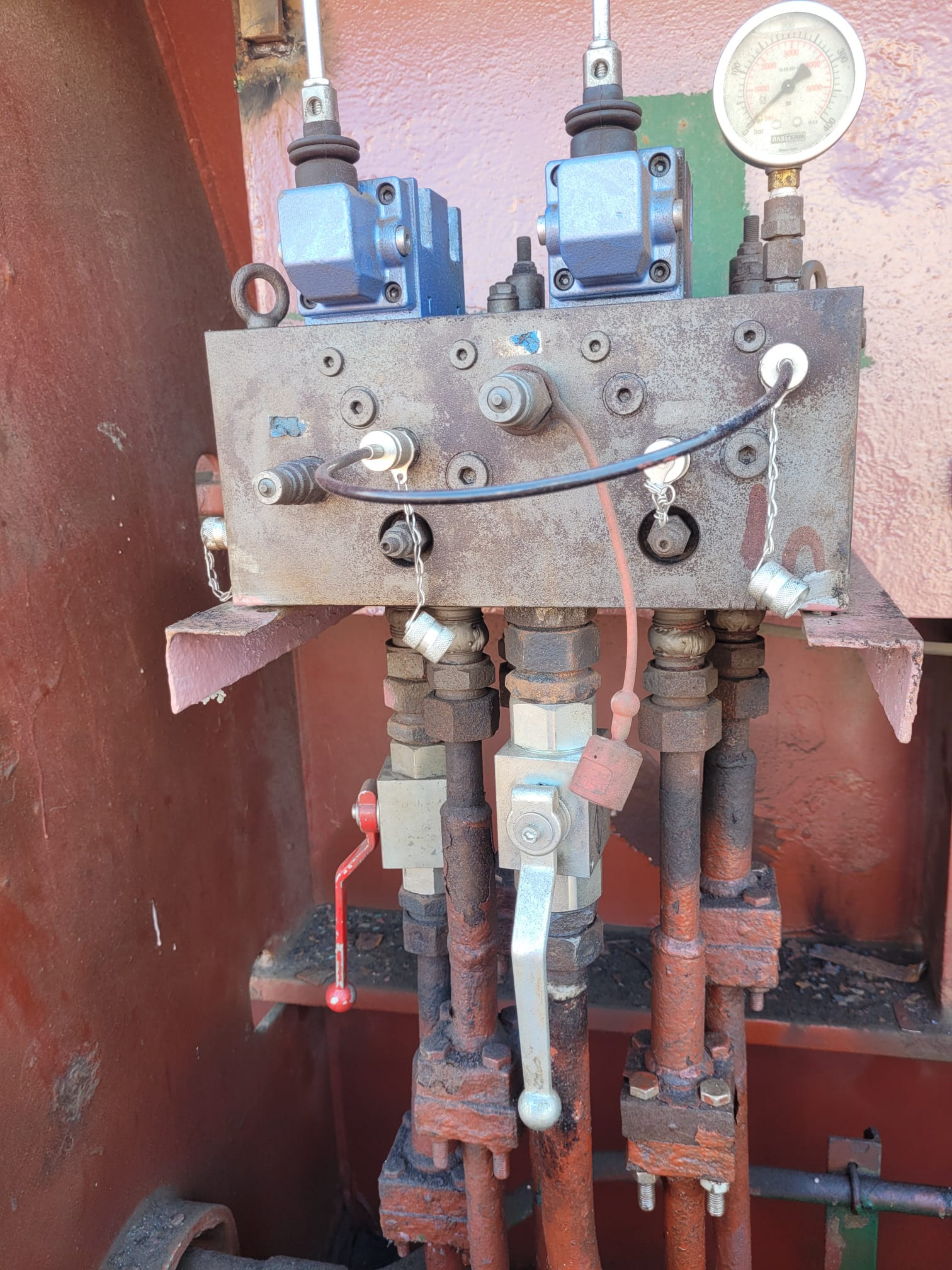




752545

HYDRO CONNECT
KV-2806
1-1/4 BSP
DN 25
400 BAR 0024





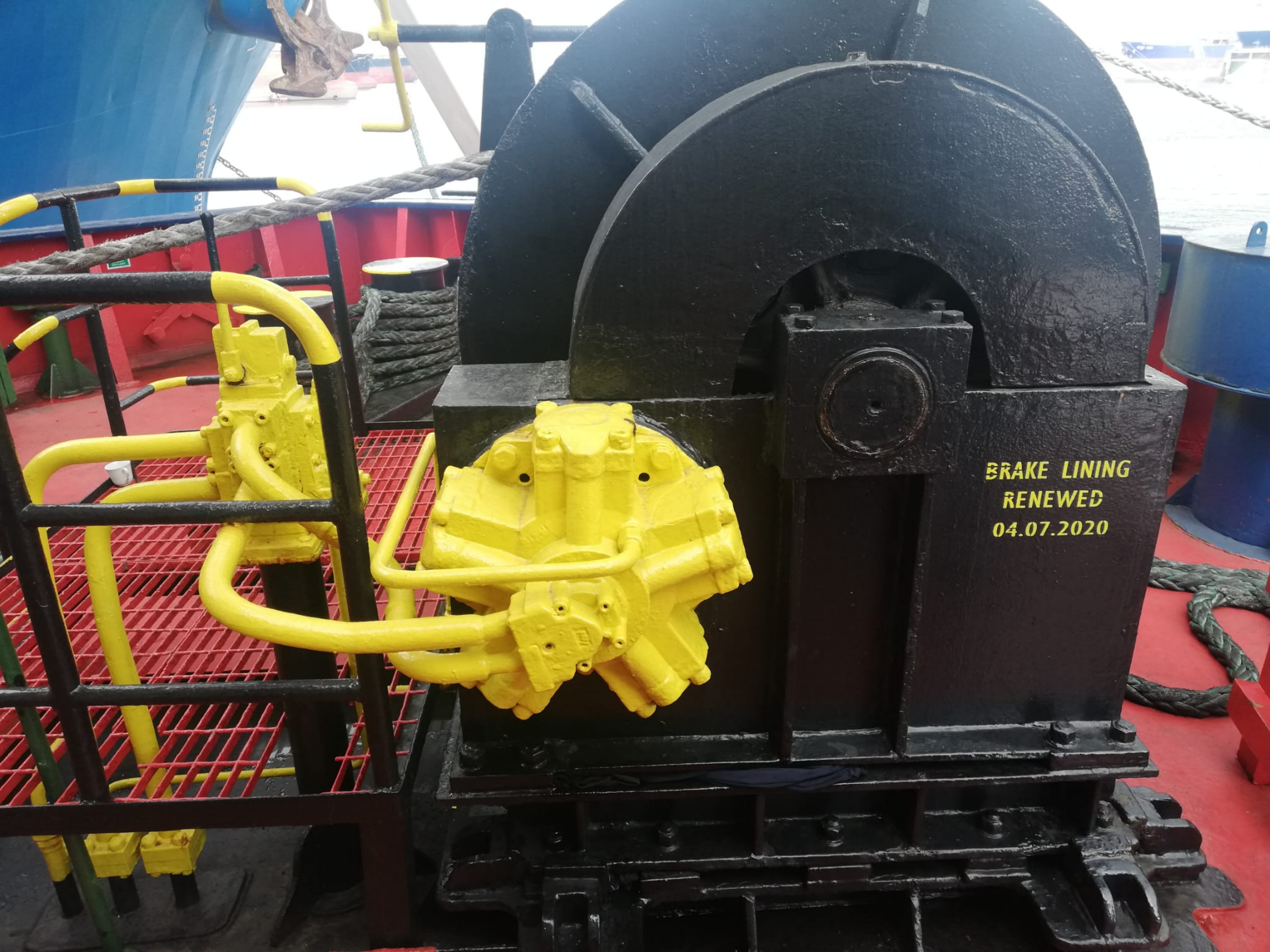








LAST LDM
09// TES



**BRAKE LINING
RENEWED
04.07.2020**

The image shows a large, black, cast-iron industrial brake assembly mounted on a ship's deck. The assembly consists of a large, semi-circular brake drum at the top, a central brake shoe mechanism, and a base. A complex arrangement of bright yellow hydraulic hoses and fittings is connected to the brake shoe. The entire unit is mounted on a red-painted metal deck. In the background, there are blue railings, thick ropes, and a blue barrel. The date stamp '04.07.2020' is clearly visible on the right side of the brake housing.



BRAKE LINING
RENEWED
04.07.2020

LOAD
TEST
7/2017

FW2 FW2 APTK

SWI 314 K



